



Population 1,818
(2021 Census)



2022

Financial Plan

www.townofcarberry.ca



Carberry, MB

REVIEW OF 2022 FINANCIAL PLAN

- ◉ Message from the Mayor
- ◉ Our Vision and Mission Statement
- ◉ 2022 Town Revenues
- ◉ 2022 Town Expenditures
- ◉ What does this all mean?
- ◉ Mill rate comparison
- ◉ Completed projects (TOC and Joint)
- ◉ Equipment purchases 2021
- ◉ Projects/purchases for 2022 (TOC and Joint)
- ◉ Did you know?
- ◉ Payment options
- ◉ Important information



MESSAGE FROM THE MAYOR

On behalf of the Town of Carberry, thank you for your interest in the budget process. Every year the Town invests in infrastructure to improve our community. In hard infrastructure such as roads, sewers, walking paths, etc., and in soft infrastructure such as programming in the arts, seniors activities, and recreation capacity to name but a few. These investments help grow our community to better service and accommodate all of our citizens.

In 2021 we were still dealing with the Covid-19 global pandemic. We were able to combat this on a local basis with the roll out of vaccines and implementation of health protocols designed to minimize the spread. Overall, the community responded well to these initiatives and there was some semblance of normality that returned in the fall prior to the Omicron variant wave that struck in December of 2020.

The Town has also invested in itself by renovating an existing building in the downtown core as our new office building. This new office will serve the residents of Carberry for generations to come and we look forward to welcoming you to our new administration centre in the Spring of 2022 once construction is complete.

In closing, thank you for making Carberry your home and we look forward to serving you in the year to come.

Sincerely,

Stuart Olmstead, Mayor of Carberry



OUR VISION AND MISSION STATEMENT

○ Vision

- Sustainable business development and residential growth will increase our population towards 2,500 people who are proud to call Carberry home, where community is more than just a word but a way of life.

○ Mission

- The purpose of the Council of the Town of Carberry is to govern in a fair and accountable manner that enhances the quality of life for our citizens.

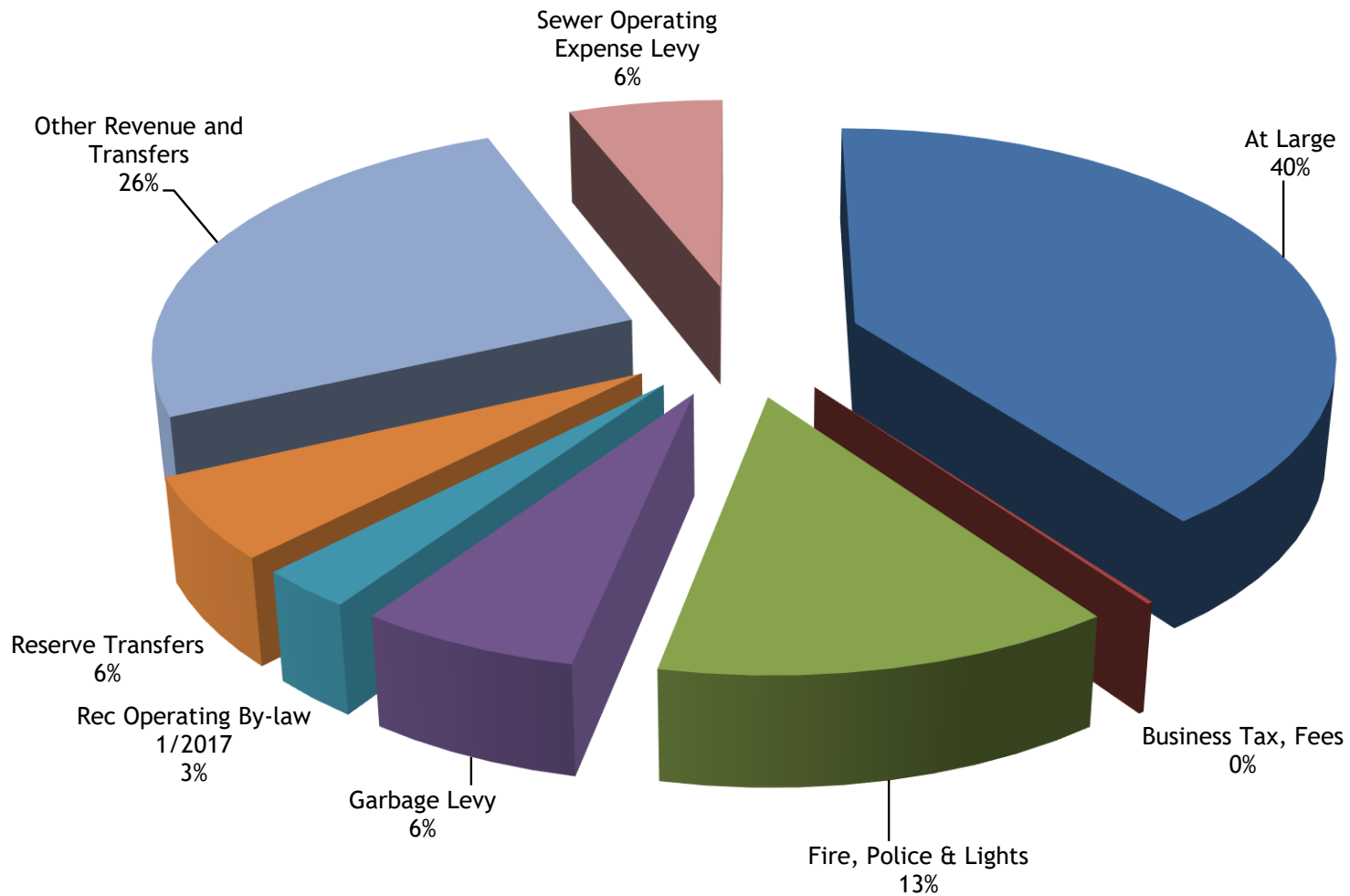


2022 TOWN REVENUES

- ◉ At Large \$1,002,975
- ◉ Fire, Police & Lights Sec 891A No.2221 \$330,000
- ◉ Garbage Levy 7/2020 \$160,125
- ◉ Rec Operating BL 1/2017 \$69,680
- ◉ Sewer Operating Expense BL 5/2016 \$151,204
- ◉ Business Tax, Fees \$4,329
- ◉ Reserve Transfers \$144,818
- ◉ Other Revenue and Transfers \$650,378

TAX REVENUE

2022 TOWN REVENUES

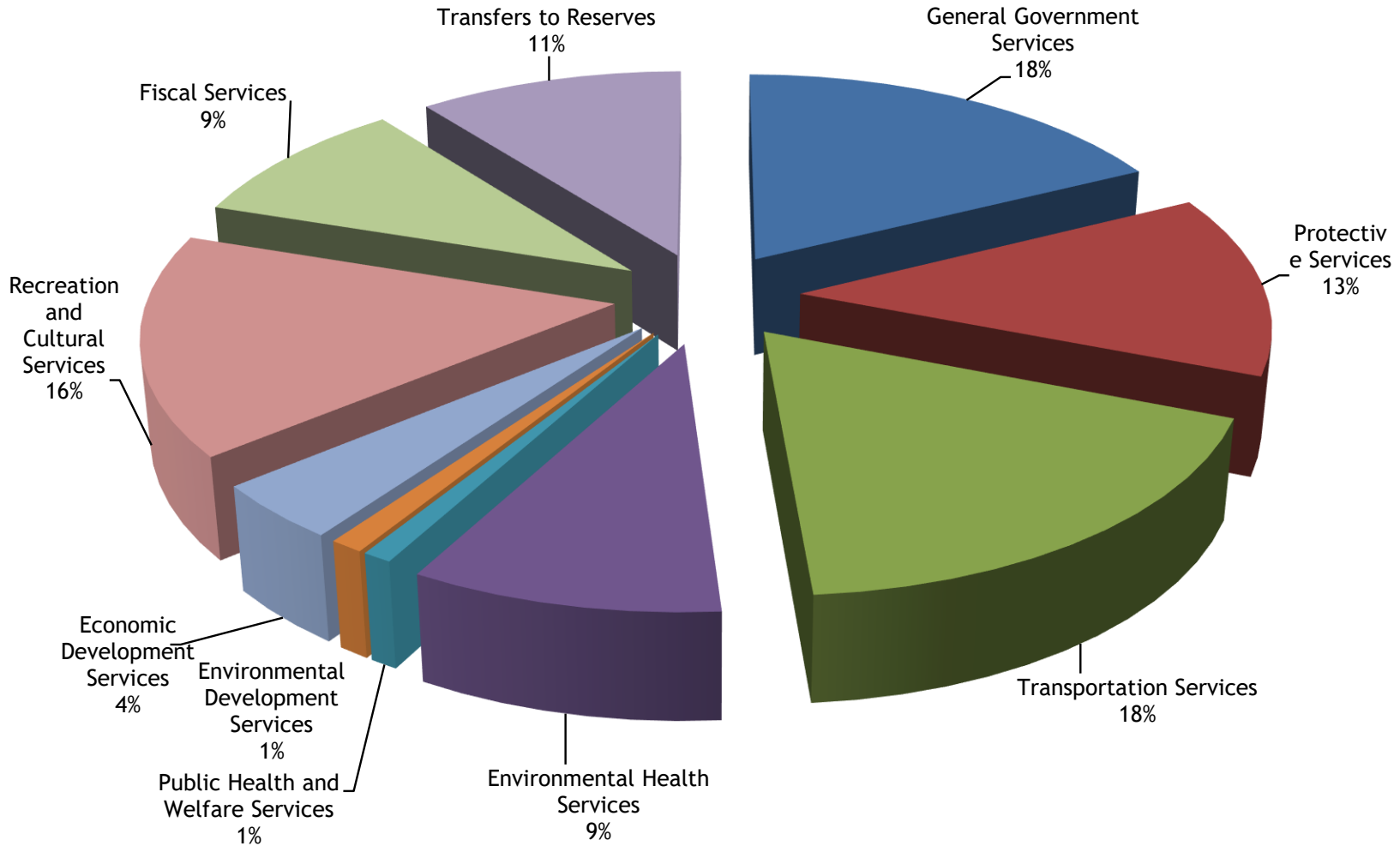


2022 TOWN EXPENDITURES

- ◉ General Government Services \$476,007
- ◉ Protective Services \$356,450
- ◉ Transportation Services \$482,987
- ◉ Environmental Health Services \$248,540
- ◉ Public Health and Welfare Services \$23,900
- ◉ Environmental Development Services \$27,270
- ◉ Economic Development Services \$110,000
- ◉ Recreation and Cultural Services \$431,929
- ◉ Fiscal Services \$253,203
- ◉ Transfers To Reserves \$284,035



2022 GENERAL EXPENDITURES



2022 TOWN EXPENDITURE BREAKDOWN

- General Government Services \$476,007 (18%)
 - Council and Legislative
 - CAO and Administration Staff
 - Office and Old Office Expenses
 - Audit Fees
 - Legal Fees
 - Assessment Fees
 - Taxes and Insurance
 - General Grants
 - Other General Government



Town of Carberry
Family • Friends • Home



◎ Protective Services \$356,450 (13%)

- Fire
- By-law Commissioners
- Police
- Emergency Measures Organization (EMO, All Net Connect, 911)
- Animal and Pest Control



◎ Transportation Services \$482,987 (18%)

- Public Works Wages and Benefits
- Equipment Fuel
- Equipment Repairs and Maintenance
- Equipment Insurance and Registration
- Workshop and Yard Operations
- Sidewalks and Boulevards
- Ditches, Culverts and Road Drainage
- Road Reconstruction
- Street Cleaning
- Snow and Ice Removal
- Fire Hydrant and Line Mtce
- Dust Control
- Street Paving
- Street Lighting
- Gravel
- Street Signs
- Sundry Expense
- Tree Removal Program
- Handivan Grant



◎ Environmental Health Services \$248,540 (9%)

- Garbage Collection
- Nuisance Grounds
- Joint Utility Employee



◎ Public Health and Welfare Services \$23,900 (1%)

- Cemetery Grants
- Social Assistance
- Doctor's Expense



◎ **Environmental Development Services \$27,270 (1%)**

- Planning and Zoning
- Urban Area Weed Control
- Communities in Bloom



◎ **Economic Development Services \$110,000 (4%)**

- Water Resources and Conservation
- Community Development Commissioner
- Economic Development Officer
- Other Economic Development

Recreation and Cultural Services \$431,929 (16%)

- Manager of Parks, Facilities and Sanitation
- Facility Maintenance and Repairs
- Recreation Operation Levy
- Community Hall Operating Levy
- CPCC Capital Contribution Levy
- CPCC Operating Levy
- Parks and Playground Operation
- Manager of Leisure Services
- Parks & Recreation Operation
- Parks & Recreation Equipment
- Golf Course Grant
- Drop in Centre Operation
- Museum Levy
- Library Levy
- Library Building Mtce and Repairs
- Archive Levy



CARBERRY AND AREA
PARKS AND RECREATION



◎ **Fiscal Services \$253,203 (9%)**

- Transfers to Capital by Reserves
- Transfer to Utility
- Tax discount and short-term loan interest
- Bad Debt Expense

◎ **Transfer to Reserves \$284,035 (11%)**

- Equipment Replacement Reserve \$30,000
- Gas Tax Reserve \$97,785
- Fire Safety Reserve \$77,500
- Fire Truck Reserve \$25,000
- Future Capital Infrastructure Development Reserve \$50,000
- Heritage Reserve \$3,750



WHAT DOES ALL THIS MEAN?

- ◎ Overall assessment increase of 1,332,110 = 1.844% average increase
- ◎ 2022 General mill rate is 16.160
- ◎ 2022 Fire, Police and Lights mill rate is 3.848
- ◎ 2022 Beautiful Plains SD mill rate is 11.025
- ◎ Sewer rate \$148.53
- ◎ Garbage rate \$175 per household
- ◎ Community Rec Services levy \$80 per household



MILL RATE COMPARISON

2022	2021 Mill Rates	2022 Mill Rates	Mill Increase Decrease (-) %	Impact on \$100,000 residential property**	Impact on \$125,000 residential property**
Beautiful Plains School Division	11.153	11.025	-1.15%	-\$5.76	-\$7.20
General Municipal At Large	19.619	20.009	1.99%	\$17.55	\$21.94
Total	30.772	31.034	0.84%	\$11.79	\$14.74
**Calculated at:					
<i>Residential: Assessment x 45% (portion taxable) x mill rate change per \$1,000</i>					
Disclosure:					
- EPTCA has NOT been deducted					
- Special Service By-laws have not been calculated.					

TAX RATE COMPARISON

2021/2022 Town of Carberry Tax Comparison *Based on Portioned Assessment

	Property 1			Property 2			Property 3			Property 4		
	2021	2022	%	2021	2022	%	2021	2022	%	2021	2022	%
*Portioned Assessment	34,880	34,880	0.00%	73,760	73,760	0.00%	48,380	48,380	0.00%	111,070	111,070	0.00%
General Municipal	\$548.28	\$563.70	2.81%	\$1,159.43	\$1,192.04	2.81%	\$760.49	\$781.87	2.81%	\$1,745.91	\$1,795.00	2.81%
Sewer Operating	\$144.20	\$148.53	3.00%	\$144.20	\$148.53	3.00%	\$144.20	\$148.53	3.00%	\$144.20	\$148.53	3.00%
Garbage Collection	\$170.00	\$175.00	2.94%	\$170.00	\$175.00	2.94%	\$170.00	\$175.00	2.94%	\$170.00	\$175.00	2.94%
Fire, Lights, Police	\$136.03	\$134.22	-1.33%	\$287.66	\$283.83	-1.33%	\$188.68	\$186.17	-1.33%	\$433.17	\$427.40	-1.33%
CPCC Operation	\$80.00	\$80.00	0.00%	\$80.00	\$80.00	0.00%	\$80.00	\$80.00	0.00%	\$80.00	\$80.00	0.00%
Total Municipal	\$1,078.51	\$1,101.44	2.13%	\$1,841.30	\$1,879.39	2.07%	\$1,343.37	\$1,371.57	2.07%	\$2,573.28	\$2,625.93	2.10%
Total School	\$389.02	\$384.55	-1.15%	\$822.65	\$813.20	-1.15%	\$539.58	\$533.39	-1.15%	\$1,238.76	\$1,224.55	-1.15%
EPTCA	-\$398.02	-\$384.55	-3.38%	-\$700.00	-\$700.00	0.00%	-\$539.58	-\$533.39	0.00%	-\$700.00	-\$700.00	-1.15%
Total Taxes Owing	\$1,069.51	\$1,101.44	2.99%	\$1,963.94	\$1,992.60	1.46%	\$1,343.37	\$1,371.57	1.46%	\$3,112.05	\$3,150.48	2.10%
Difference	\$31.94			\$28.66			\$28.20			\$38.43		
	Property 5			Duplex			Business 1			Business 2		
	2021	2022	%	2021	2022	%	2021	2022	%	2021	2022	%
*Portioned Assessment	146,750	146,750	0.00%	102,920	102,920	0.00%	118,430	118,430	0.00%	101,860	101,860	0.00%
General Municipal	\$2,306.76	\$2,371.63	2.81%	\$1,617.80	\$1,663.29	2.81%	\$1,861.60	\$1,913.95	2.81%	\$1,601.14	\$1,646.16	2.81%
Sewer Operating	\$144.20	\$148.53	3.00%	\$288.40	\$297.06	3.00%	\$144.20	\$148.53	3.00%	\$288.40	\$297.06	3.00%
Garbage Collection	\$170.00	\$175.00	2.94%	\$240.00	\$240.00	2.94%	\$850.00	\$875.00	0.00%	\$340.00	\$350.00	2.94%
Fire, Lights, Police	\$572.33	\$564.69	-1.33%	\$401.39	\$396.04	-1.33%	\$461.88	\$455.72	-1.33%	\$397.25	\$391.96	-1.33%
CPCC Operation	\$80.00	\$80.00	0.00%	\$160.00	\$160.00	0.00%			0.00%			0.00%
Total Municipal	\$3,273.29	\$3,339.85	2.03%	\$2,707.59	\$2,756.39	2.03%	\$3,317.68	\$3,393.20	1.80%	\$2,626.79	\$2,685.18	2.28%
Total School	\$1,636.70	\$1,617.92	-1.15%	\$1,147.87	\$1,134.69	-1.15%	\$2,364.10	\$2,348.94	-1.15%	\$2,033.33	\$2,020.29	-0.64%
EPTCA	-\$700.00	-\$700.00	0.00%			0.00%			0.00%			0.00%
Total Taxes Owing	\$4,209.99	\$4,257.77	1.13%	\$3,855.45	\$3,891.08	1.13%	\$5,681.78	\$5,742.14	0.92%	\$4,660.12	\$4,705.47	1.06%
Difference	\$47.78			\$35.63			\$60.36			\$45.35		

MILL RATE COMPARISONS

Mill Rate Comparisons

2022

Municipality	*General Mill Rate	Population	**Total Assessment Value
Mun of North Cypress-Langford (2021 FP)	6.052	3,011	420,169,060
Glenboro/Mun. of South Cypress	11.784	2,189	182,335,620
Municipality of North Norfolk (2021 FP)	13.037	3,915	347,378,430
RM of Elton (2021 FP)	15.484	1,276	200,158,620
RM of Victoria (2021 FP)	17.300	1,188	108,920,530
Mun of Westlake-Gladstone	17.970	2,943	257,058,540
Town of Carberry	20.009	1,818	73,587,280
Town of Neepawa	22.060	5,685	202,400,300
Town of Minnedosa (2021 FP)	22.361	2,741	136,183,050

* General mill rates do NOT include school levy's or special service levy's

** Please note the total assessment value (the value used to calculate mill rates) is generally higher for rural areas than urban

COMPLETED PROJECTS - 2021

◎ Paving Projects



COMPLETED PROJECTS CONT



Fanny Overlay



Baron Bay to Higgins Drive



COMPLETED PROJECTS CONT

- Jardine and Stickle Ave Paving ✓



Stickle Ave (before)

Jardine Street (after)



Stickle Ave (after)



JOINT PROJECTS COMPLETED IN 2021 CONT.

- ◉ Duct cleaning, carpet cleaning and sandpoint at Municipal Office ✓
- ◉ New furnace and brick repair at Old Town Hall ✓
- ◉ Painting at Fire Hall ✓
- ◉ Ball Park washroom renovation - ongoing
- ◉ Lights and paint at the Library ✓
- ◉ Sandpoint at Gingerbread House ✓



Funding Source

Jointly funded between the Town of Carberry and Mun. of North Cypress-Langford Municipal Building Funds.

Together
Everyone
Achieves
More

EQUIPMENT PURCHASES IN 2021

Public Works Truck and John Deere Mower/Snowblower

The new JD mower/snowblower replaced the 2018 Kubota.

Funding Source

Equipment Reserve



INFRASTRUCTURE PROJECTS FOR 2022

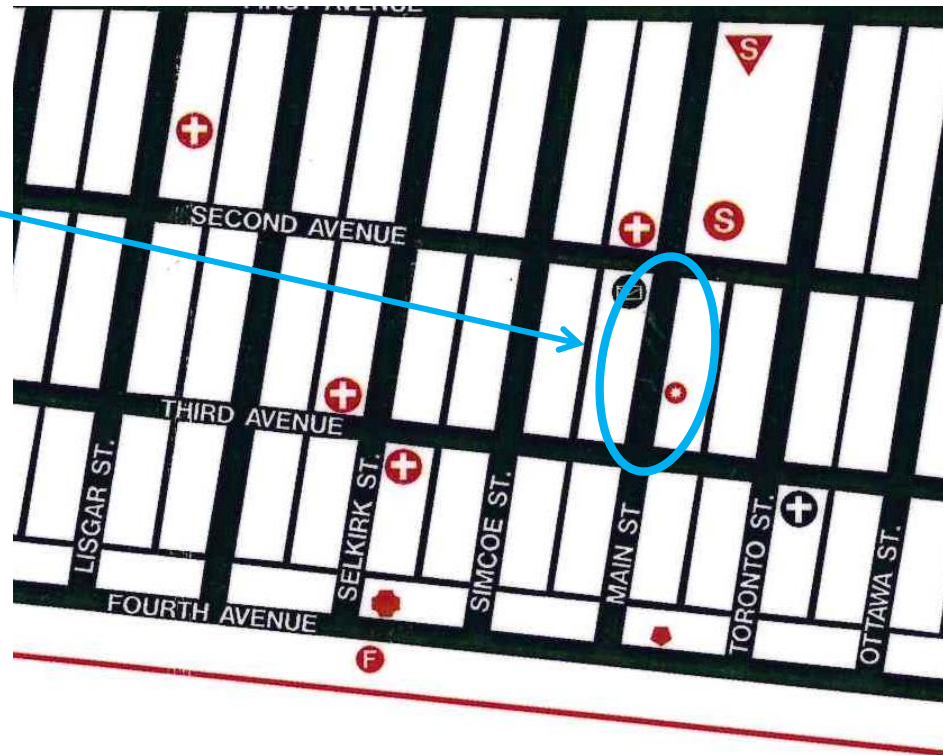
Main Street from 2nd Ave to 3rd Ave

New paving of Main Street from 2nd Ave to 3rd Ave.

Funding Source

100% Gas Tax Fund

Location



◎ Main Street from 2nd Ave to 3rd Ave (before)



BUILDING RENOVATION 2022

- ◉ The new Town of Carberry office located at 44 Main Street was put into operation on April 1st, 2022. An open house is planned for June 2022.



JOINT PROJECTS FOR 2022

There are a few joint projects that will be taking place this year that are listed as follows:

- Emergency backup generator at the Carberry Plains Memorial Hall

WORKING
TOGETHER



- Continue renovations on ball park washrooms

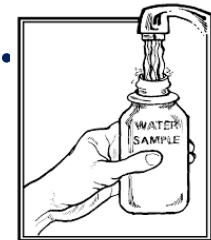
Funding Source

Jointly funded between the Town of Carberry and Mun. of North Cypress-Langford Municipal Building Funds.



?? DID YOU KNOW...? ??

- ❑ The Town of Carberry and Municipality of North Cypress-Langford share the revenue and expenses 50/50 for many budgetary items.
 - ❑ Here are a few examples: fire department, parks and recreation, old office, emergency measures, nuisance grounds, Joint Utility employee, Manager Parks Facilities and Sanitation, Manager or Leisure Services, Seniors, Handivan, CPCC, Hall, Museum, Library, Drop In Centre, Cemetery, Arts, and Archives.
- ❑ January 1st to December 31st, 2022 taxes are due September 30th, 2022.
- ❑ Our office accepts prepayments in any amount for taxes throughout the year.
- ❑ Water sample kits are available upon request.



?? DID YOU KNOW...? ??

- Your property assessment is always accessible online at: https://web22.gov.mb.ca/mao/public/search_select.aspx
- Get social!! Follow us on Twitter, Facebook and Instagram.**
- Check out our webpage at www.townofcarberry.ca for updates and news in the community. 
- We accept your used batteries for recycling.** 
- Garbage and recycling should be at the curb by 7 a.m. (garbage on Tuesdays and recycling on Thursdays).
- We offer glass recycling pickup on the first Tuesday of every month.**
- The Carberry Transfer Station is open Monday from 10 AM to 2 PM, Wednesday and Friday from 11 AM to 7 PM and Saturday from 9 AM to 5 PM.



PAYMENT OPTIONS

◎ By mail

- Cheque or money order mailed to: Box 130, Carberry, MB R0K 0H0

◎ Post dated cheques

- Mailed to: Box 130, Carberry, MB R0K 0H0
- Or dropped off at : 44 Main Street, Carberry, MB from 8:30 AM to 12 PM (noon) and 1 PM to 4:30 PM.



◎ In person

- Municipal Office: 44 Main Street, Carberry, MB from 8:30 AM to 12 PM (noon) and 1 PM to 4:30 PM.



◎ Online banking

- When adding Town of Carberry as your payee, search “Town of Carberry”. Your account number is your roll number (do not enter the decimal). If your roll number is only 5 digits and you need 9, enter zeros (0) in front of your roll number to make up a total of 9 numbers.



◎ E-transfer

- Please use email: town@townofcaberry.ca



Please note there are daily limits for e-transfer, so pay early!

IMPORTANT INFORMATION

◎ The Jan 1st to Dec 31st 2022 taxes are due **September 30th, 2022.**

◎ **Early bird rates:**

- 1.5% to June 30th
- 1% to July 31st
- and .5% to August 31st

**EARLY BIRD
DISCOUNT**



◎ **Late fees** of 1.25% will be charged on unpaid taxes - added the first business day of every month after Sept 30th.

◎ **Remember** to save your tax bill for your income tax preparer the following year.

◎ Please visit **our website** for more information:

- www.townofcarberrry.ca



Town of Carberry
Family • Friends • Home

